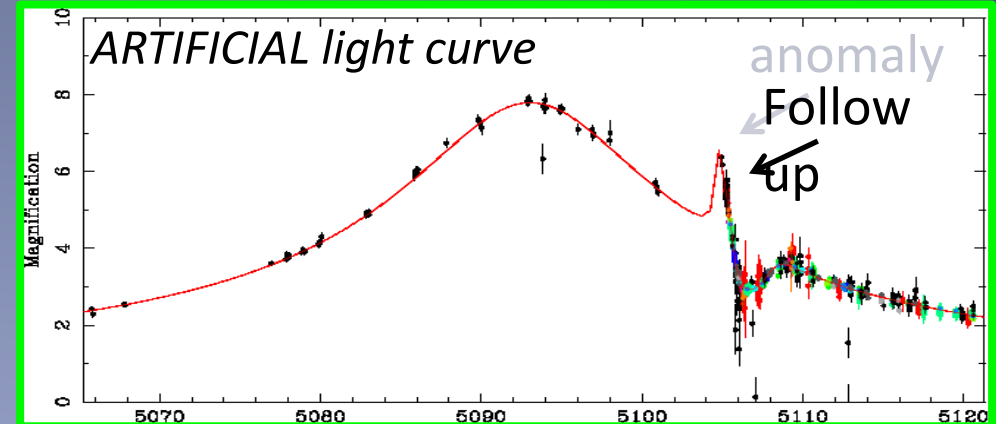
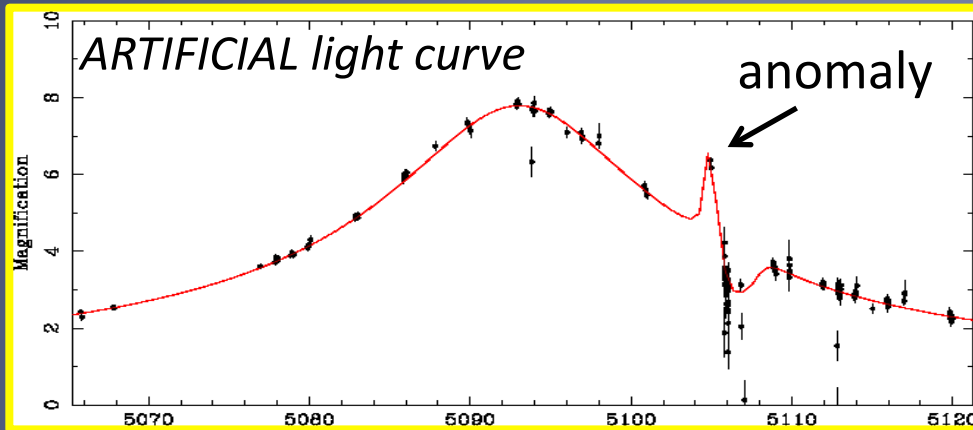


Detection efficiency of planets in the low-mag event, MOA-2009-BLG-266



PROCESS

Generating ARTIFICIAL light curves



Real time anomaly search simulation

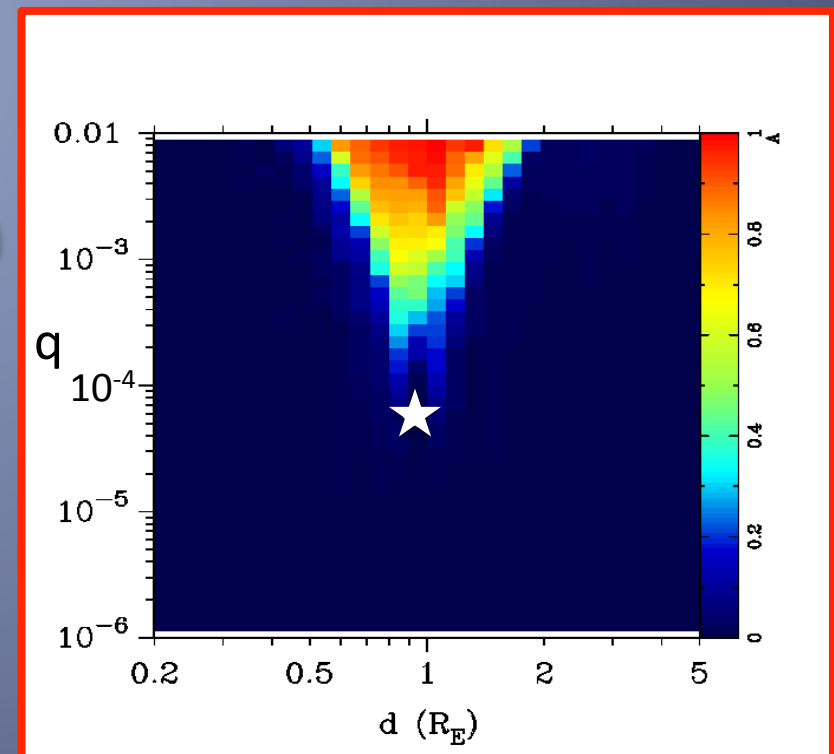


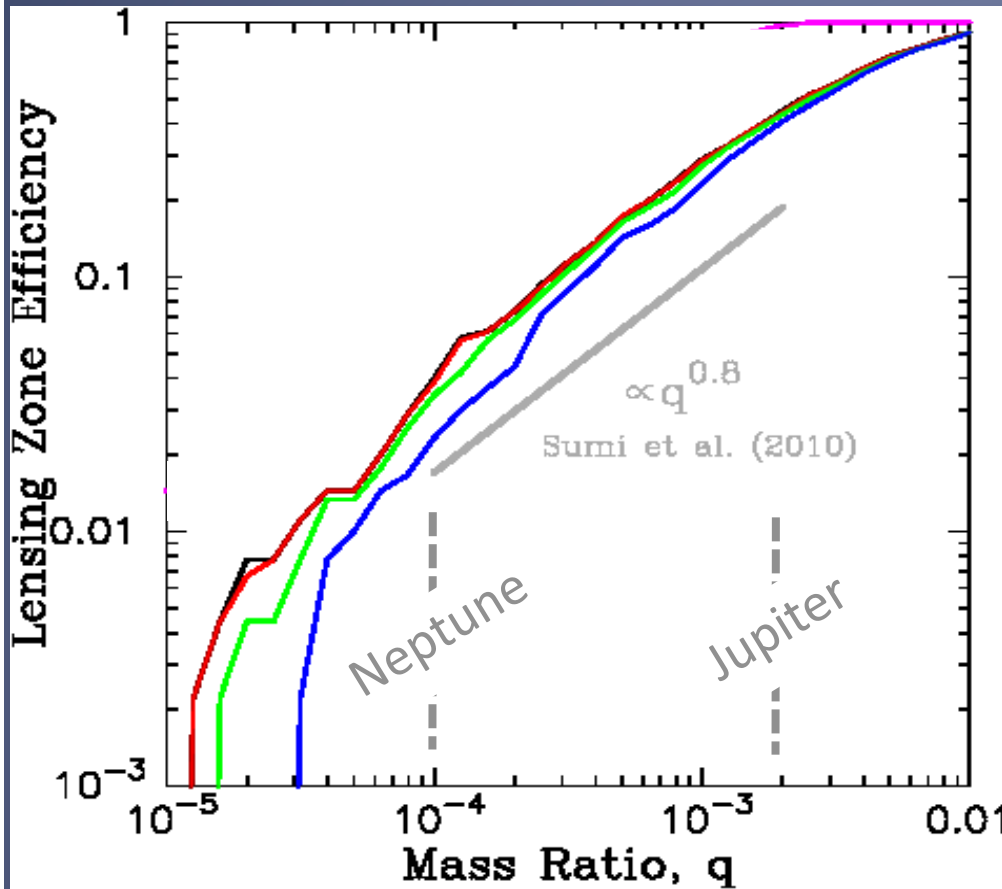
Follow up observation simulation



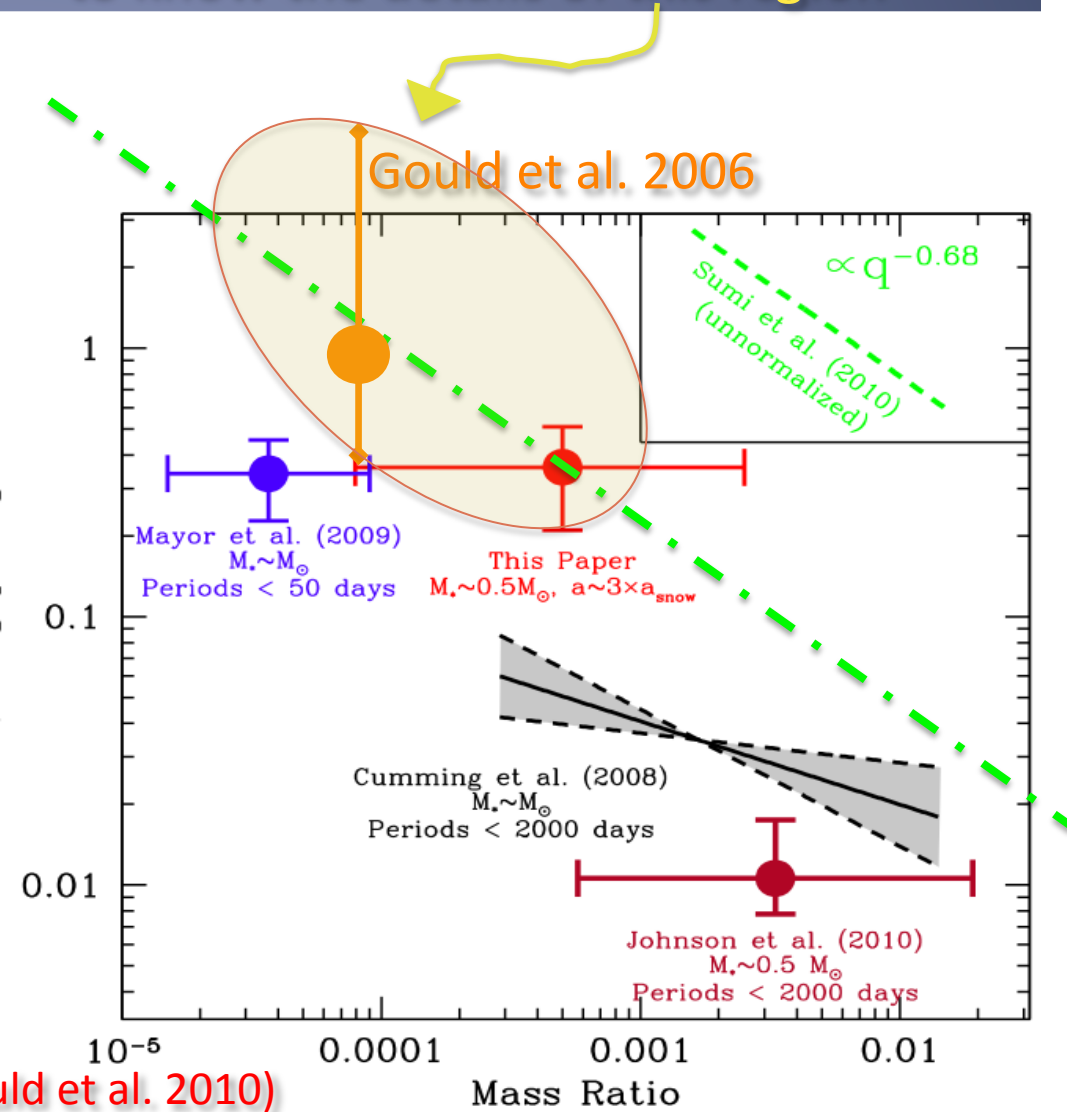
Detection efficiency of MB09266Lb

10 +/- 3.3 % ($q = 5.3e-5$, $d = 0.92$)
smallest mass ratio





Need to derive the detection efficiency of planets in *all the low magnification events* to know the details of this region



- $\tau = 4$ [hours]
- $\tau = 12$ [hours]
- $\tau = 24$ [hours]
- $\tau = 72$ [hours]

τ : the interval from anomaly detection to follow up start

(Gould et al. 2010)