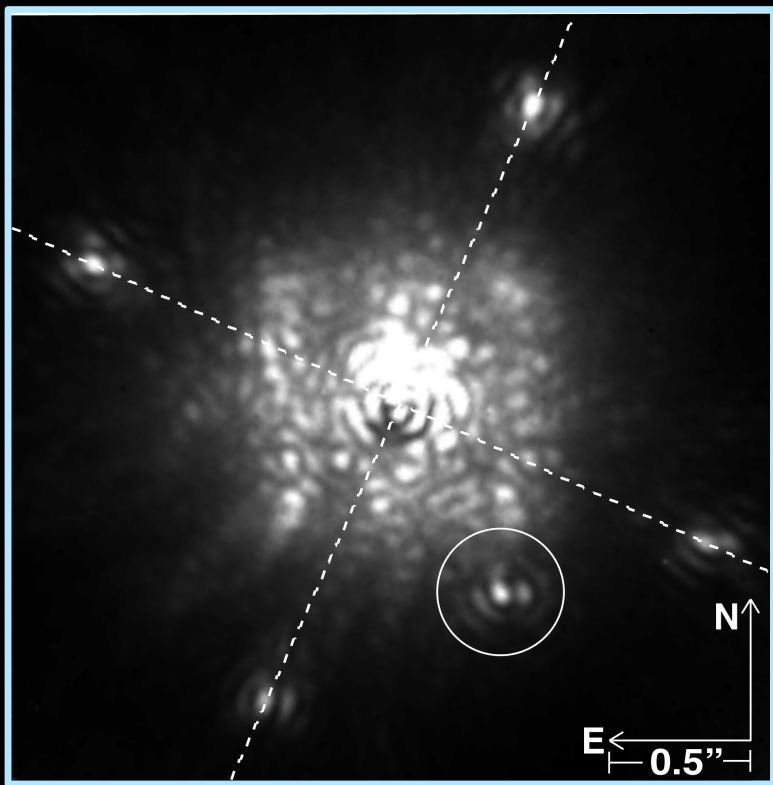
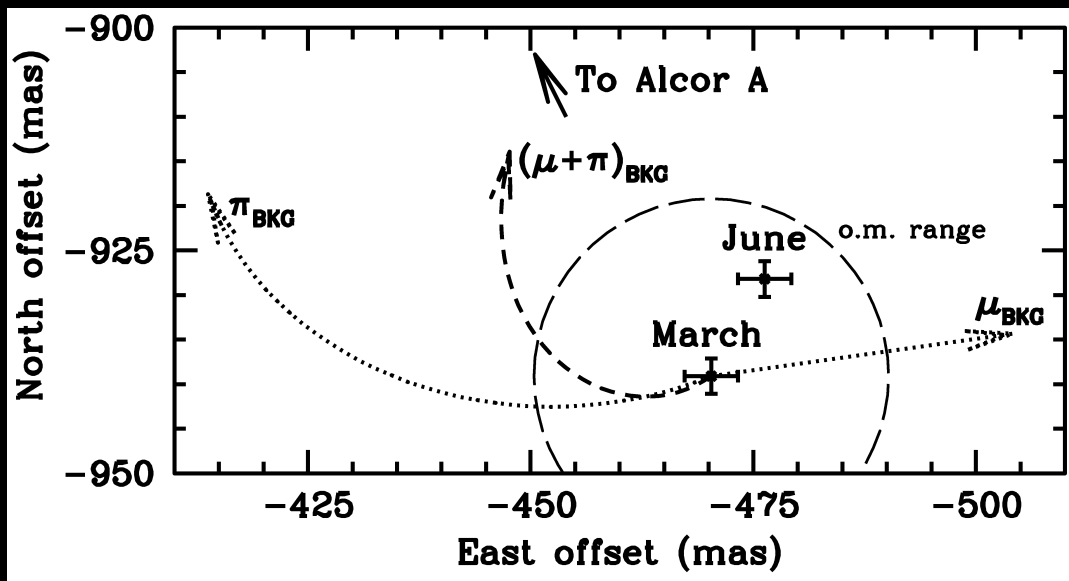


High Contrast Studies of Nearby Stars with Project 1640

with Ben R. Oppenheimer (P.I.), Sasha Hinkley, Anand Sivaramakrishnan, Ian Parry, Doug Brenner



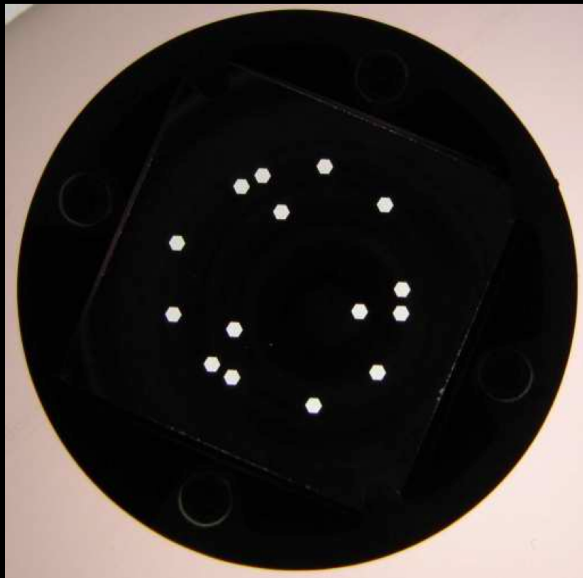
Alcor and M-dwarf companion



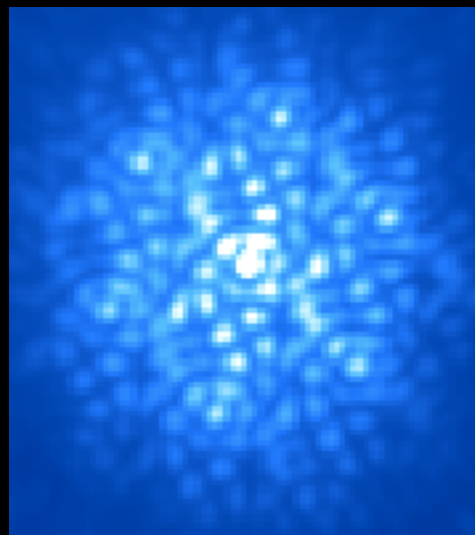
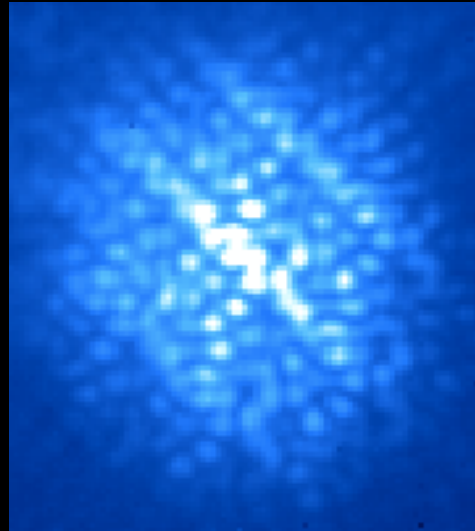
Relative astrometry over 3 months, confirming physical association

Spectrally Resolved Aperture Mask Interferometry

with Anand Sivaramakrishnan (P.I.), Remi Soummer, Michal Simon, Ben R. Oppenheimer, Sasha Hinkley

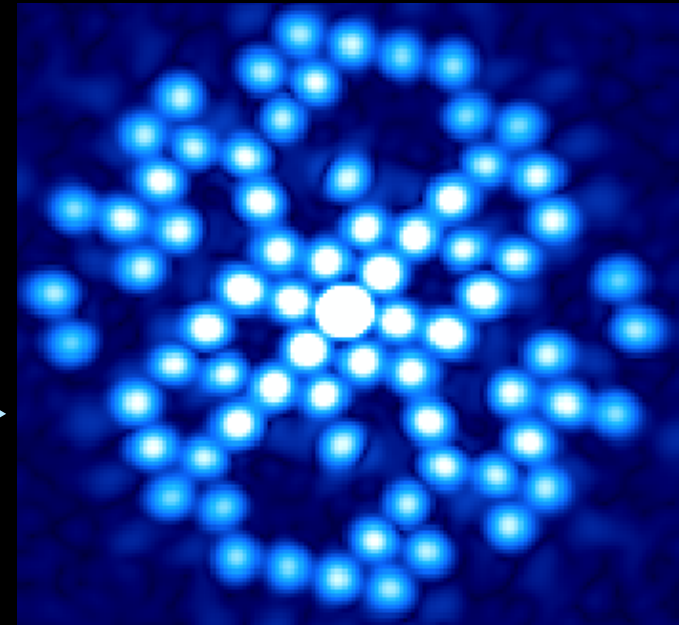


Aperture mask
(Sivaramakrishnan & Tuthill)



Mask diffraction fringe patterns

\mathcal{F}
→



“splodges” – Fourier transformed fringes