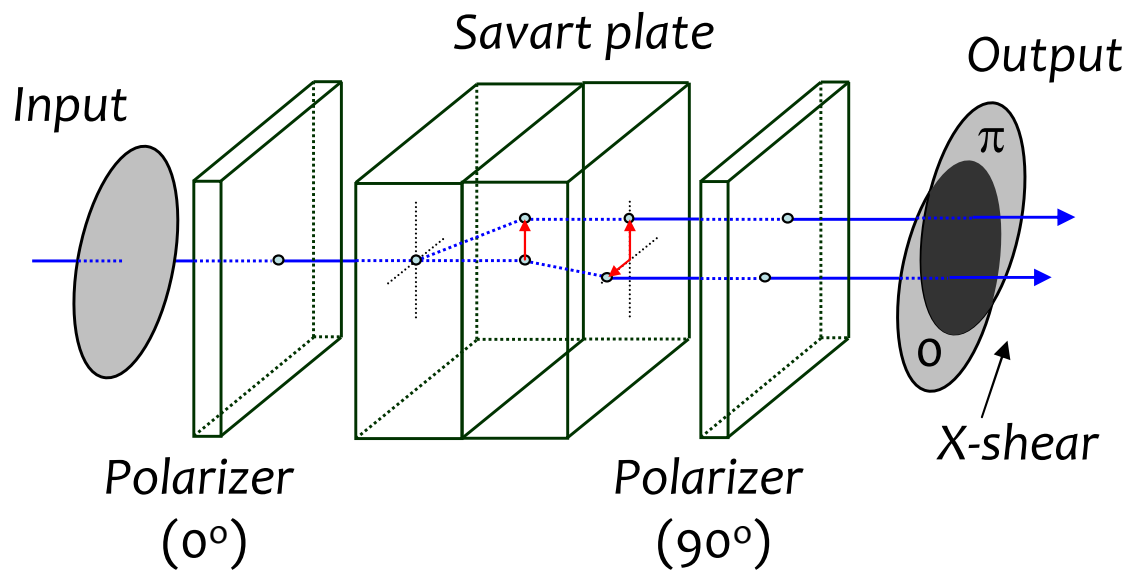


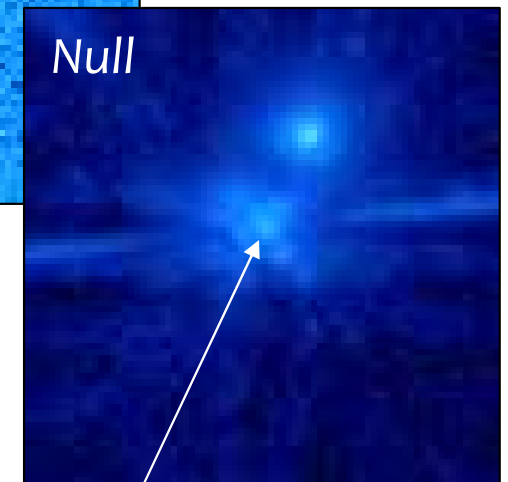
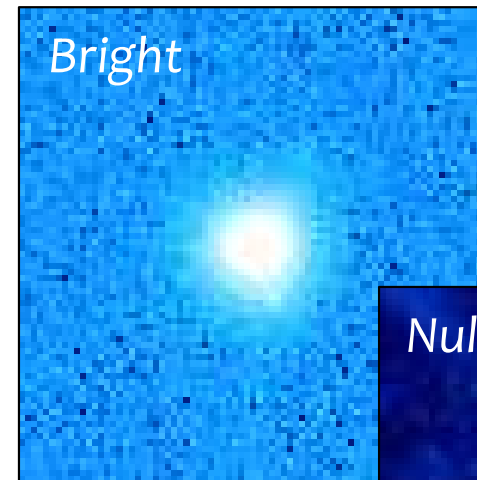
Broadband Deep Nulling with Savart-Plate Lateral-Shearing Interferometric Nuller for Exoplanet Detection (SPLINE)

N. Murakami, Y. Konno, N. Baba (Hokkaido Univ.),
T. Matsuo (NAOJ), T. Kotani (ISAS/JAXA), M. Tamura (NAOJ)

SPLINE =
Achromatic and stable nulling coronagraph



Experimental results



Peak null $\sim 10^{-5}$
(Bandwidth >30%)

Application of SPLINE is also presented
→ Second-Earth Imager for TMT (SEIT)