



National Aeronautics and Space  
Administration  
Jet Propulsion Laboratory  
California Institute of Technology



NASA Exoplanet Science Institute

# Sagan Summer Workshop Wrap Up

Dr. Dawn Gelino

30 July 2010



National Aeronautics and Space  
Administration  
Jet Propulsion Laboratory  
California Institute of Technology

---



NASA Exoplanet Science Institute

[ Survey Time ]



# Workshop Statistics



- Largest Sagan/Michelson Summer Workshop to date!
- 122 attendees
  - From 16 countries
  - 51% contributed posters
  - 59% gave pops
  - 77% participated in group projects
- 30 talks given by 20 speakers

# What Have We Covered?



- Stars as Homes for Habitable Planetary Systems
  - Stellar Properties and Evolution
  - Stellar Variability (as noise for planets)
  - Stellar Variability (planets are noise)
  - Observational Surveys
  - Planetary Characterization
  - Asteroseismology
  - Planet-Star interactions and Habitable Zones
  - Biosignatures and Habitability
  - Current and Future Observational Opportunities and Challenges
- This is a very exciting time and there are various opportunities to get into the game
  - Kepler and CoRoT are revolutionizing the field
  - It is NOT easy!
  - Don't trust stellar ages!
  - Cats play an important role! (...my cat's name is Monkey)

# Griffith Observatory Tour



NASA Exoplanet Science Institute

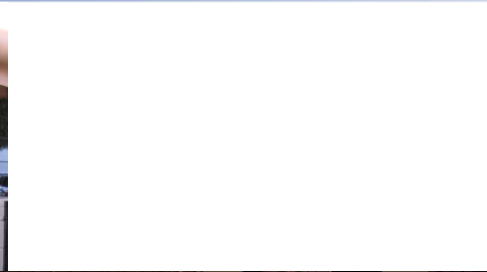




# The Banquet



NASA Exoplanet Science Institute



30 July 2010

SSW10 Closing - D. Gelino

# Many Thanks...



NASA Exoplanet Science Institute

- Annie Baglin (Paris Observatory, CoRoT)
- Sarbani Basu (Yale University)
- Chas Beichman (NExSci)
- Debra Fischer (Yale University)
- Dawn Gelino (NExSci)
- Ron Gilliland (STScI, Kepler)
- Vicki Meadows (University of Washington)
- John Stauffer (IPAC/Caltech)
- Ignasi Ribas (Institut de Ciències de l'Espai)

...to the SOC for a great agenda...



...to those behind the scenes...



NASA Exoplanet Science Institute

- **Ellen O’Leary**
- **Carolyn Brinkworth**
- **Helga Mycroft**
- **Kathy Golden**
- **Irene Loera**
- **Renee Newman**
- **Tracy Wang**
- **Dennis Whitman**
- **Kaspar von Braun**



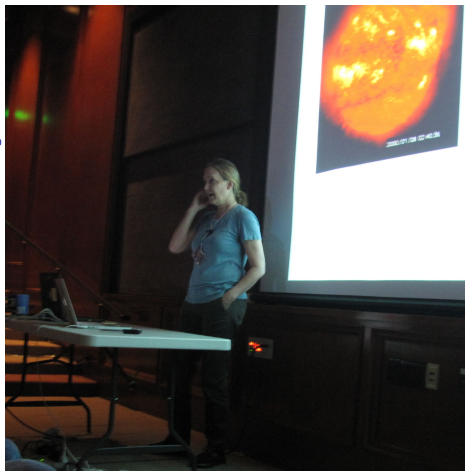
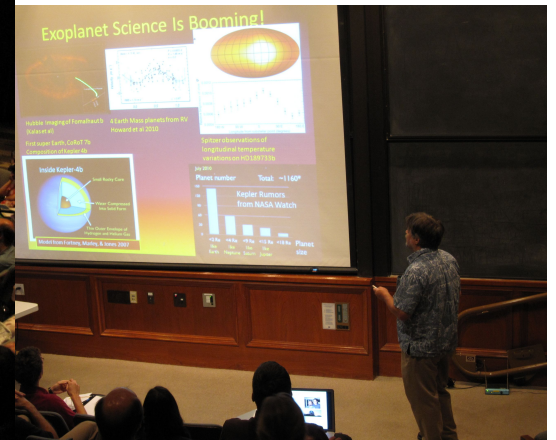
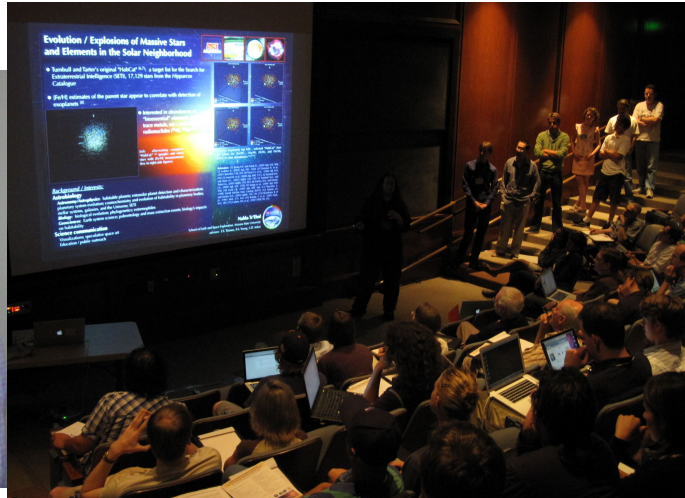


# ...to our Speakers...



- All updated talks will be posted on-line before the end of next week

NASA Exoplanet Science Institute



30 July 2010

SSW10 Closing - D. Gelino

# ...and to our Group Participants!



NASA Exoplanet Science Institute



30 July 2010

SSW10 Closing - D. Gelino



# NASA EXOPLANET SCIENCE INSTITUTE

## Sagan Fellowships

*Deadline: November 4, 2010*

The NASA Exoplanet Science Institute announces the 2011 Carl Sagan Postdoctoral Fellowship Program. These fellowships support recent postdoctoral scientists to conduct independent research broadly related to the goals of the NASA Exoplanet Exploration program. These goals include the discovery and characterization of planetary systems and Earth-like planets around nearby stars. The proposed research may be theoretical, observational, or instrumental.

The Sagan Postdoctoral Fellowship program is open to applicants of any nationality to conduct research at a U.S. institution. Applicants should have earned (or will have earned) their doctoral degrees in astronomy, physics or related disciplines after January 1, 2008. Sagan Postdoctoral Fellowships are awarded for up to 3 years.



### *Possible Research Areas Include*

- Planet Detection
- Planetary Transits
- Planet Formation
- Coronagraphy
- Interferometry
- Astrometry
- Comparative Exoplanetology

### *For More Information*

Please see the detailed Sagan Fellowship announcement of opportunity and application instructions at the NExSci web page: <http://nexsci.caltech.edu/sagan/fellowship.shtml> or email [saganfellowship@ipac.caltech.edu](mailto:saganfellowship@ipac.caltech.edu). The deadline for applications, institutional letter of endorsement, and letters of reference is Thursday, November 4, 2010.





National Aeronautics and Space  
Administration  
Jet Propulsion Laboratory  
California Institute of Technology



NASA Exoplanet Science Institute

NASA Exoplanet Science Institute

30 July 2010

# Exploring Strange New Worlds: From Giant Planets to Super Earths

May 1 - 6, 2011  
Flagstaff, Arizona

*Planet Formation and Disks*  
*What Can We Learn from Our Solar System*  
*Characterization of Exoplanets using JWST*  
*Architecture of Planetary Systems*  
*Planets and Non-Solar Type Stars*

<http://exep.jpl.nasa.gov/flagstaff2011>

## Confirmed Speakers:

J. C. Augereau, T. Barman, J. Bean, A. Boccaletti, M. Brown, M. Clampin, D. Deming, E. van Dishoek,  
S. Dodson-Robinson, R. Doyon, K. Enya, M. Fridlund, T. Greene, T. Guillot, O. Guyon, J. Johnson,  
L. Kaltenegger, D. Kirkpatrick, J. Krist, H. Knutson, H. Levison, M. Meyer, C. Mordasini, R. Murray-Clay,  
D. Pourbaix, D. Rouan, S. Seager, A. Sivaramakrishnan, K. Su, M. Tamara, G. Tinetti, W. Traub, D. Valencia,  
J. Valenti.



Images: Xiaohong J. Shan (Milky Way) / Tenji (Grand Canyon; distributed under the GNU Free Documentation License)



# Travel Reimbursement



- Travel Reports are to be mailed in *AFTER* your return home:

ATTN: ‘Your Travel Contact’  
Caltech –IPAC, MS 100-22  
770 S. Wilson Ave.  
Pasadena, CA 91125

- Travel Reports **must** include:
  - Completed reimbursement form (included in guidelines)
  - Original receipts (no meal receipts required)
  - Working FAX number

# The Class of 2010!



NASA Exoplanet Science Institute



*We hope to see you at next year's workshop!*